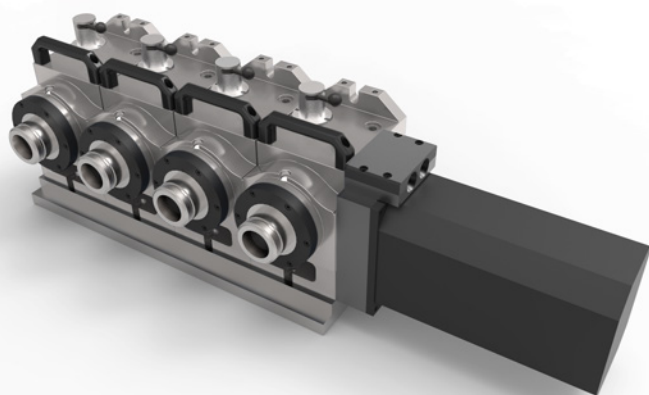


VH-5C

MULTI



DESIGNED AND
MANUFACTURED IN THE USA



Available in two, three or four-head configurations, the multi-head VH-5C is perfect for making multiple small parts in one set-up. Multi-heads keeps your machine spindle running by reducing the number of tool changes and requiring less frequent operator intervention. Air collet closure is required.

FEATURES

- Dual Spindle Bearings
- Dual Worm Bearings
- Heavy Duty
- Compact Design
- High Precision and Repeatability
- Highly Integrable for VMCs
- Compatible with Standard 5C Tooling
- Wrap Around Motor Available

SPECIFICATIONS

Collet Size	.015625 - 1.0625 in
Nose Thread	2.1875 - 10 in

SPINDLE

Max Torque	Varies with Motor
Backlash	30 arc-sec
Through Bore	1.0625 in 26.9875 mm
Center Height	5.45 in + .001 101 mm
Gear Ratio	60:1
Max Load (Horizontal)	10 lbs 4.5 kg

INDEXING (available on all models)

Accuracy +/-	30 arc-sec
Repeatability	10 arc-sec
Max Run-Out	.0004 in .0102 mm

GENERAL

Table Weight	Varies
--------------	--------

See reverse for unit dimensions

Specifications subject to change without notice.

CUSTOMIZE WITH YOUR MOTOR OF CHOICE TO MATCH YOUR SHOP ENVIRONMENT

FANUC

BALDOR
MOTORS AND DRIVES



SIEMENS



YASKAWA



21720 Marilla Street
Chatsworth, CA 91311

818-280-8120

Sales@IndexDesignsCNC.com

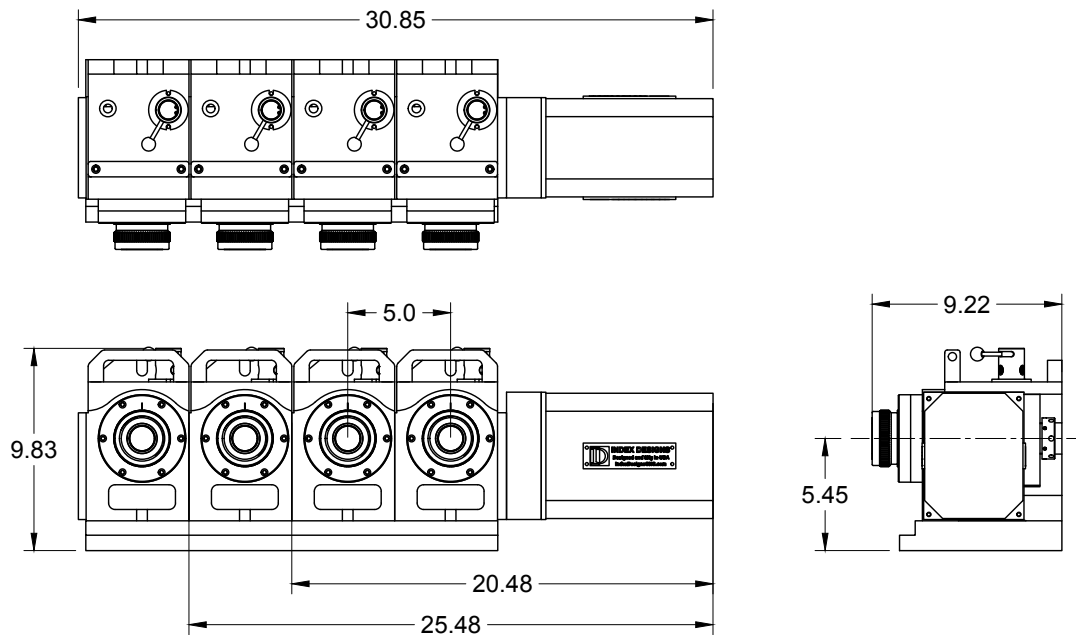
www.IndexDesignsCNC.com

VH-5C

MULTI

GENERAL DIMENSIONS

SIDE MOTOR



WRAP AROUND MOTOR

