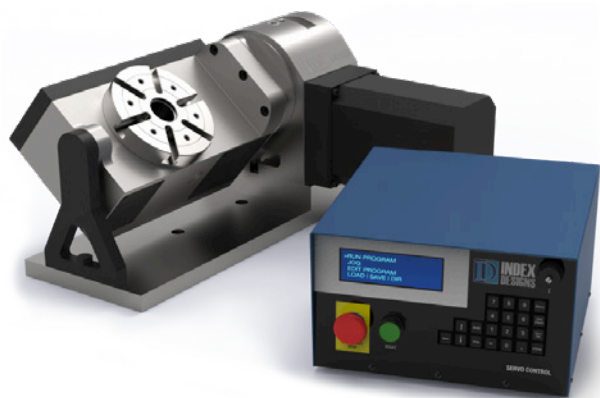


TR-6



DESIGNED AND
MANUFACTURED IN THE USA

The TR-6 is a standalone 2-axis tilting rotary table and programmable controller. This all-inclusive package will transform your 3-axis vertical machine into a very affordable, easy to use, 3+2 5-axis machine. Its compact design allows for operation on machines with small work envelopes.

FEATURES

- Dual Spindle Bearings
- Dual Worm Bearings
- Heavy Duty
- Compact Design
- High Precision and Repeatability
- Highly Integrable for VMCs
- Throated Worm Wheel
- 4th & 5th Axis Positional Indexer
- Complete With Dual-Axis Servo Box

SPECIFICATIONS

Diameter	6.3 in. 160 mm
Number of T-Slots	6

SPINDLE

Max Torque	Varies with Motor
Backlash	30 arc-sec
Through Bore	1.5 in 38 mm
Center Height	7.95 in 201.93 mm
Gear Ratio A	90:1
Gear Ratio B	60:1
Max Load (Horizontal)	50 lbs 22.7 kg
Clamp Method	Pneumatic
Brake Torque @ 120psi	225 ft/lbs 305 N.m

INDEXING (available on all models)

Accuracy +/-	15 arc-sec
Repeatability (A/B)	4/8 arc-sec
Tilt Travel Limit	+30 / -120
Tilt Accuracy	20 arc-sec

GENERAL

Air Pressure Max	120 psi 8.3 bar
Table Weight	270 lbs 122.5 kg

Specifications subject to change without notice.

TR-6 4TH- AND 5TH-AXIS PACKAGE

This package is everything you need to turn your 3-axis machine into a 3+2 5-axis workhorse. This package comes completely assembled and mounted on a sub-plate for a fast, accurate set-ups.

The 2-axis controller has many features and has 4 modes of index control. You can choose to have the CNC feed the controller each AB move using standard print macros or using internal programs with M-functions or manual cycling. Or, it can provide full XYZAB DNC to your CNC giving you the ability to run very large 5-axis programs even if your machine lacks the needed memory. Additionally, the control enables your CNC to access your USB storage key to save and load programs easily.



21720 Marilla Street
Chatsworth, CA 91311

818-280-8120

Sales@IndexDesignsCNC.com

www.IndexDesignsCNC.com

TR-6

GENERAL DIMENSIONS

