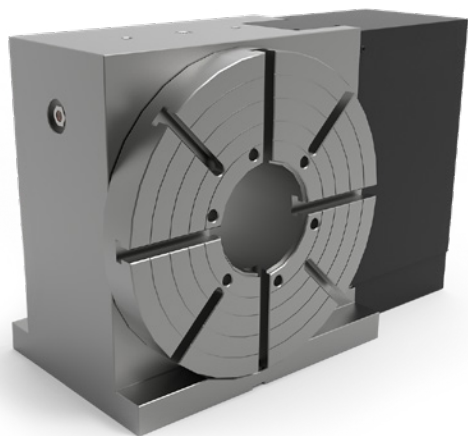


VH-15



DESIGNED AND
MANUFACTURED IN THE USA



The VH-15 is an 8 T-slot design providing plenty of mounting points for larger fixtures. The VH-15 is designed for a 15 inch chuck. A vertically mounted motor allows the VH-15 to fit on smaller tables.

FEATURES

- Dual Spindle Bearings
- Dual Worm Bearings
- Heavy Duty
- Compact Design
- High Precision and Repeatability
- Highly Integrable for VMCs
- Large Through Bore

SPECIFICATIONS

Diameter	15 in. 381 mm
Number of T-Slots	8

SPINDLE

Max Torque	Varies with Motor
Backlash	30 arc-sec
Through Bore	5.125 in 130.18 mm
Center Height	8.5 in 216 mm
Gear Ratio	180:1
Max Load (Horizontal)	400 lbs. 181 kg
Clamp Method	Pneumatic
Brake Torque @ 120psi	900 ft/lbs 1220 N.m

INDEXING (available on all models)

Accuracy +/-	15 arc-sec
Repeatability	4 arc-sec

GENERAL

Air Pressure Max	120 psi 8.3 bar
Table Weight	~600 lbs ~272 kg

Specifications subject to change without notice.

CUSTOMIZE WITH YOUR MOTOR OF CHOICE TO MATCH YOUR SHOP ENVIRONMENT

FANUC

BALDOR
MOTORS AND DRIVES



SIEMENS



YASKAWA



21720 Marilla Street
Chatsworth, CA 91311

818-280-8120

Sales@IndexDesignsCNC.com

www.IndexDesignsCNC.com

VH-15

GENERAL DIMENSIONS

