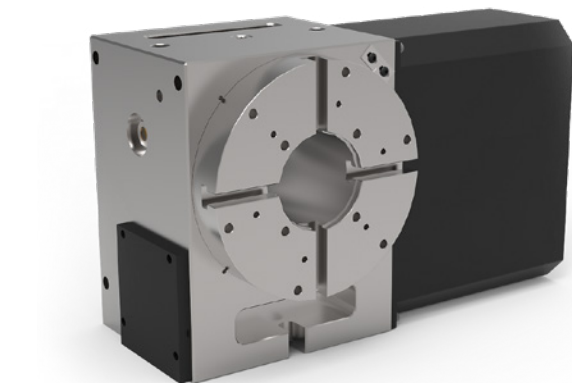


VH-8XL



DESIGNED AND
MANUFACTURED IN THE USA



If you like our VH-8, but need a larger through hole, our VH-8XL is your answer offering a 3.27" through bore, combined with the great features and specifications of the VH-8.

FEATURES

- Dual Spindle Bearings
- Dual Pre-Loaded Worm Bearings
- Heavy Duty
- Compact Design
- Mountable both Horizontal and Vertical
- High Precision and Repeatability
- Precision Ground, 64rc Steel Worm
- NiSn Bronze Worm Wheel
- Large Through Bore

SPECIFICATIONS

Diameter	8.25 in. 210 mm
Number of T-Slots	4

SPINDLE

Max Torque	Varies with Motor
Backlash	30 arc-sec
Through Bore	3.27 in 83 mm
Center Height	6.75 in 171.5 mm
Gear Ratio	90:1
Max Load (Horizontal)	235 lbs 107 kg
Clamp Method	Pneumatic
Brake Torque @ 120psi	225 ft/lbs 305 N.m

INDEXING (available on all models)

Accuracy +/-	15 arc-sec
Repeatability	4 arc-sec

GENERAL

Air Pressure Max	120 psi 8.3 bar
Table Weight	190 lbs ~86 kg

Specifications subject to change without notice.

CUSTOMIZE WITH YOUR MOTOR OF CHOICE TO MATCH YOUR SHOP ENVIRONMENT

FANUC

BALDOR
MOTORS AND DRIVES



SIEMENS



YASKAWA



21720 Marilla Street
Chatsworth, CA 91311

818-280-8120

Sales@IndexDesignsCNC.com

www.IndexDesignsCNC.com

VH-8XL

GENERAL DIMENSIONS

