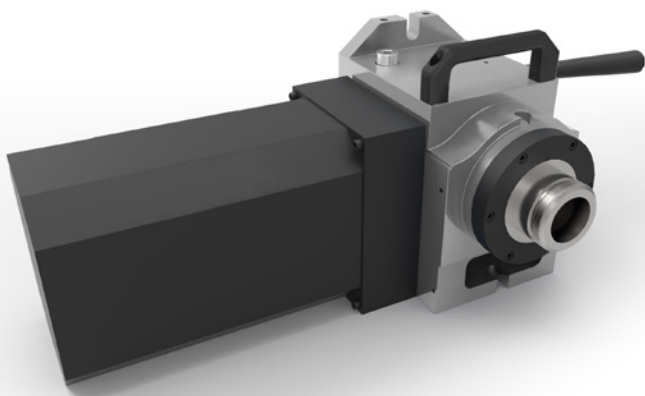


VH-5C



DESIGNED AND
MANUFACTURED IN THE USA



The VH-5C is perfect for small part machining. The unit comes standard with a manual collet closure, with an optional air collet closure for an additional charge. Spindle and worm have a dual bearing system for rigidity.

FEATURES

- Dual Spindle Bearings
- Dual Worm Bearings
- Heavy Duty
- Compact Design
- High Precision and Repeatability
- Highly Integrable for VMCs
- Compatible with Standard 5C Tooling

SPECIFICATIONS

Collet Size	.015625 - 1.0625 in
Nose Thread	2.1875 - 10 in

SPINDLE

Max Torque	Varies with Motor
Backlash	30 arc-sec
Through Bore	.0625 in 1.5875 mm
Center Height	4 in + .001 101 mm
Gear Ratio	60:1
Max Load (Horizontal)	10 lbs 4.5 kg

INDEXING (available on all models)

Accuracy +/-	30 arc-sec
Repeatability	10 arc-sec
Max Run-Out	.0004 in .0102 mm

GENERAL

Table Weight	~60 lbs ~27 kg
See reverse for unit dimensions	

Specifications subject to change without notice.

CUSTOMIZE WITH YOUR MOTOR OF CHOICE TO MATCH YOUR SHOP ENVIRONMENT

FANUC

BALDOR
MOTORS AND DRIVES



SIEMENS



YASKAWA



21720 Marilla Street
Chatsworth, CA 91311

818-280-8120

Sales@IndexDesignsCNC.com

www.IndexDesignsCNC.com

VH-5C

GENERAL DIMENSIONS

