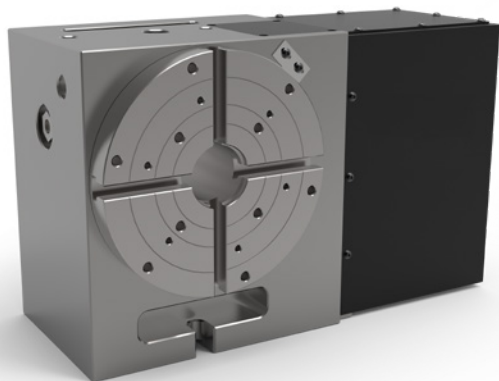


VH-8



DESIGNED AND
MANUFACTURED IN THE USA



The competitively priced VH-8 is affordable without sacrificing quality. Built with a dual bearing system for the spindle and worm, providing superior front and back support. Equipped with 4 T-slots and 3 bolt circles for ample mounting points for your chucks or fixtures.

FEATURES

- Dual Spindle Bearings
- Dual Pre-Loaded Worm Bearings
- Heavy Duty
- Compact Design
- Mountable both Horizontal and Vertical
- High Precision and Repeatability
- Precision Ground, 64rc Steel Worm
- NiSn Bronze Worm Wheel

SPECIFICATIONS

Diameter	8.25 in. 210 mm
Number of T-Slots	4

SPINDLE

Max Torque	Varies with Motor
Backlash	30 arc-sec
Through Bore	2 in 51 mm
Center Height	6.75 in 171.5 mm
Gear Ratio	90:1
Max Load (Horizontal)	235 lbs 107 kg
Clamp Method	Pneumatic
Brake Torque @ 120psi	225 ft/lbs 305 N.m

INDEXING (available on all models)

Accuracy +/-	15 arc-sec
Repeatability	4 arc-sec

GENERAL

Air Pressure Max	120 psi 8.3 bar
Table Weight	210 lbs ~95 kg

Specifications subject to change without notice.

CUSTOMIZE WITH YOUR MOTOR OF CHOICE TO MATCH YOUR SHOP ENVIRONMENT

FANUC

BALDOR
MOTORS AND DRIVES



SIEMENS



YASKAWA



21720 Marilla Street
Chatsworth, CA 91311

818-280-8120

Sales@IndexDesignsCNC.com

www.IndexDesignsCNC.com

VH-8

GENERAL DIMENSIONS

